
Cable ID CAT6-UTP-95M	Summary PASS	Test Limit TIA Cat 6 Channel	Length 312 ft	Headroom 5.5 dB (NEXT)	Date / Time 05/26/2022 01:48 PM
---------------------------------	------------------------	--	-------------------------	----------------------------------	---

Total Length:	312 ft
Number of Reports:	1
Number of Passing Reports:	1
Number of Failing Reports:	0
Number of Warning Reports:	0
Documentation Only:	0



Cable ID: CAT6-UTP-95M

Test Limit: TIA Cat 6 Channel

Limits Version: V7.1

Date / Time: 05/26/2022 01:48:36 PM

Operator: 01

Headroom 5.5 dB (NEXT 1,2-4,5)

Cable Type: Cat 6 U/UTP

NVP: 69.0%

Main: Versiv

S/N: 1747425

Software Version: V6.1 Build 3

Calibration Date: 05/11/2018

Adapter: DSX-8000 (DSX-CHA804)

S/N: 21095401

Test Summary: PASS

Remote: Versiv

S/N: 1747424

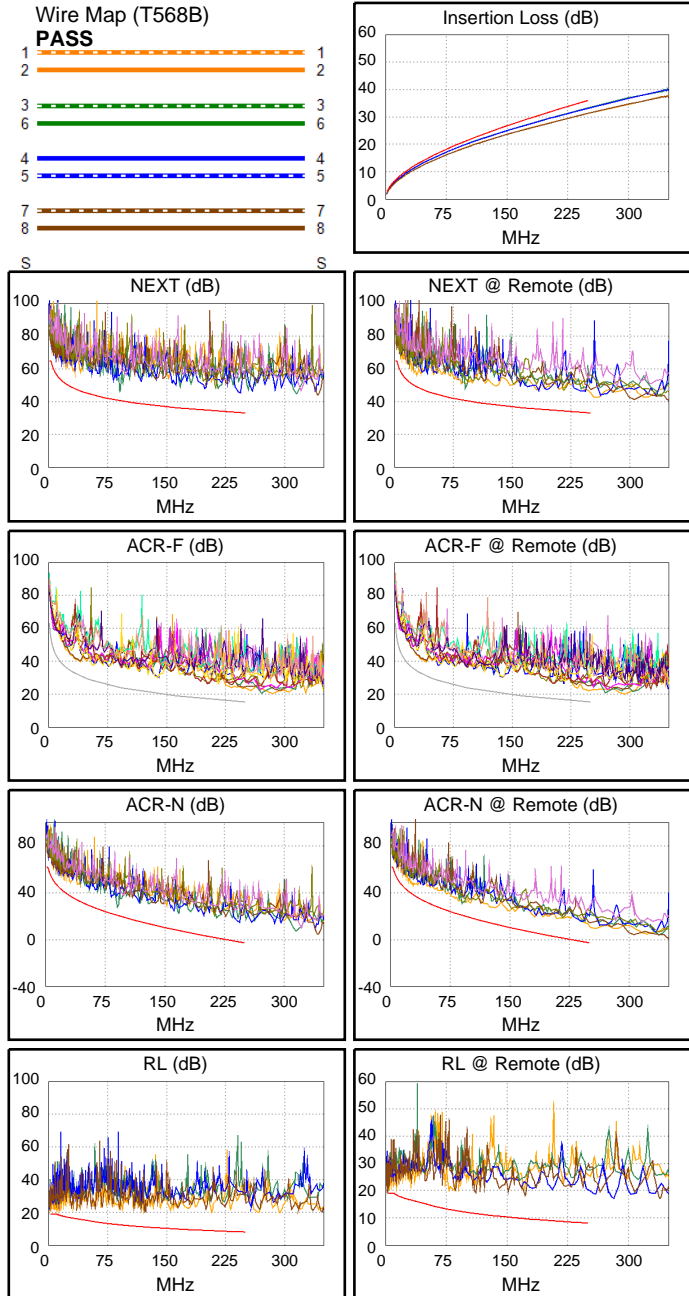
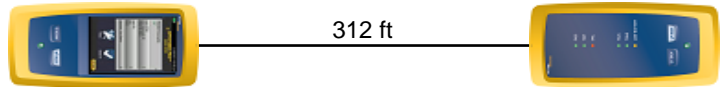
Software Version: V6.1 Build 3

Calibration Date: 05/11/2018

Adapter: DSX-8000R (DSX-CHA804)

S/N: 21101460

Length (ft), Limit 328	[Pair 7,8]	312
Prop. Delay (ns), Limit 555	[Pair 3,6]	480
Delay Skew (ns), Limit 50	[Pair 3,6]	20
Resistance (ohms)	[Pair 3,6]	16.05
Insertion Loss Margin (dB)	[Pair 3,6]	2.5
Frequency (MHz)	[Pair 3,6]	250.0
Limit (dB)	[Pair 3,6]	35.9



Worst Case Margin Worst Case Value

PASS	MAIN	SR	MAIN	SR
Worst Pair	1,2-4,5	1,2-3,6	1,2-7,8	1,2-7,8
NEXT (dB)	5.5	6.9	10.7	11.0
Freq. (MHz)	90.5	28.1	243.0	238.0
Limit (dB)	40.7	49.2	33.3	33.5
Worst Pair	1,2	1,2	1,2	1,2
PS NEXT (dB)	8.0	7.9	12.4	11.7
Freq. (MHz)	90.8	90.3	243.0	243.5
Limit (dB)	37.8	37.8	30.4	30.4

PASS	MAIN	SR	MAIN	SR
Worst Pair	1,2-3,6	1,2-3,6	1,2-3,6	1,2-3,6
ACR-F (dB)	6.7	6.5	6.7	6.7
Freq. (MHz)	245.0	242.0	245.0	247.5
Limit (dB)	15.5	15.6	15.5	15.4
Worst Pair	3,6	3,6	3,6	3,6
PS ACR-F (dB)	9.1	8.8	9.1	9.0
Freq. (MHz)	245.0	242.0	245.0	247.5
Limit (dB)	12.5	12.6	12.5	12.4

N/A	MAIN	SR	MAIN	SR
Worst Pair	1,2-4,5	1,2-3,6	1,2-7,8	1,2-3,6
ACR-N (dB)	6.7	7.6	15.3	14.8
Freq. (MHz)	90.8	28.1	243.0	250.0
Limit (dB)	20.5	38.4	-2.0	-2.8
Worst Pair	4,5	3,6	1,2	3,6
PS ACR-N (dB)	9.5	9.3	17.0	15.4
Freq. (MHz)	90.5	28.0	243.0	250.0
Limit (dB)	17.7	35.8	-5.0	-5.8

PASS	MAIN	SR	MAIN	SR
Worst Pair	1,2	1,2	7,8	7,8
RL (dB)	3.3	2.9	8.5	8.5
Freq. (MHz)	13.0	3.8	124.5	172.5
Limit (dB)	18.4	19.0	11.0	9.6

Compliant Network Standards:
 10BASE-T 100BASE-TX 100BASE-T4
 1000BASE-T 2.5GBASE-T 5GBASE-T
 ATM-25 ATM-51 ATM-155
 100VG-AnyLan TR-4 TR-16 Active
 TR-16 Passive