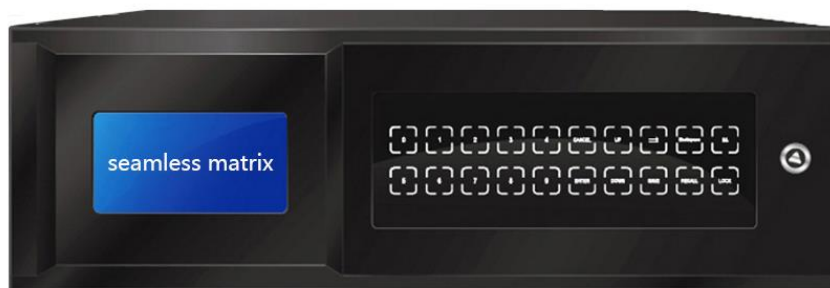


User's manual

User's manual



Matrix Switcher Software user manual

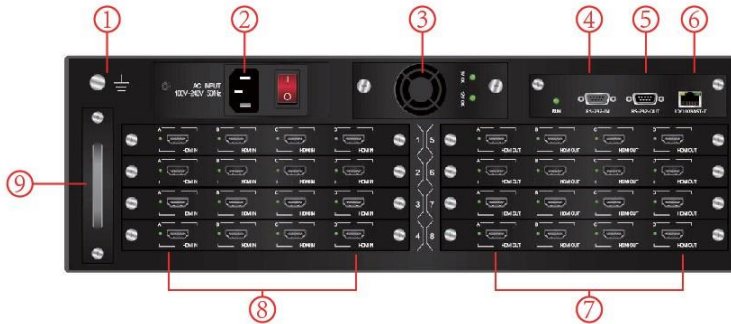
Professional Matrix Switcher Software Rev.1.0

目录

1. Interface	4
1.1 Panel diagram :	4
1.2、Function instructions :	4
2. Software setting	6
2.1 Software interface	6
2.2 Communication setting	6
2.3 Splice setting.....	7
2.4 Matrix setting.....	7
2.5 ID setting	8
3. Splicing operation	9
4. Matrix IP setting	10
5. Note	12

1. Interface

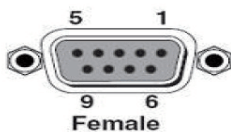
1.1 Panel diagram :



1.2、 Function instructions :

- 1 shows the access matrix connected to the earth, the screw fixed the earth wire
- 2 shows the matrix 220V AC interface, and the power switch.
- 3 shows the matrix pluggable power supply
- 4 shows the input interface of the matrix RS232 serial port
- 5 shows the output interface of the matrix RS232 serial port
- 6 shows the matrix TCP/ IP network control port
- 7 shows matrix pluggable signal output board card, 1-card-4-channels board card from left to right, A/B/C/D shows:1/2/3/4 increased with the board card. For example: The first board card is 1/2/3/4, the second is 5/6/7/8, and so on. The port light will be lightened when there is a signal.
- 8 shows matrix pluggable signal input board card, 1-card-4-channels board card from left to right, A/B/C/D shows:1/2/3/4 increased with the board card. For example: The first board card is 1/2/3/4, the second is 5/6/7/8, and so on. The port light will be lightened when there is a signal
- 9 shows matrix pluggable fan box.

HD digital series matrix support RS232, Ethernet control port all kinds of system to control.



RS232 port is a 9-pin female connector. The pin descriptions are as follows

Pin number	Pin	instruction
1	N/u	No
2	Tx	Tx
3	Rx	Rx
4	N/u	No
5	Gnd	Ground
6	N/u	No
7	N/u	No
8	N/u	No
9	N/u	No

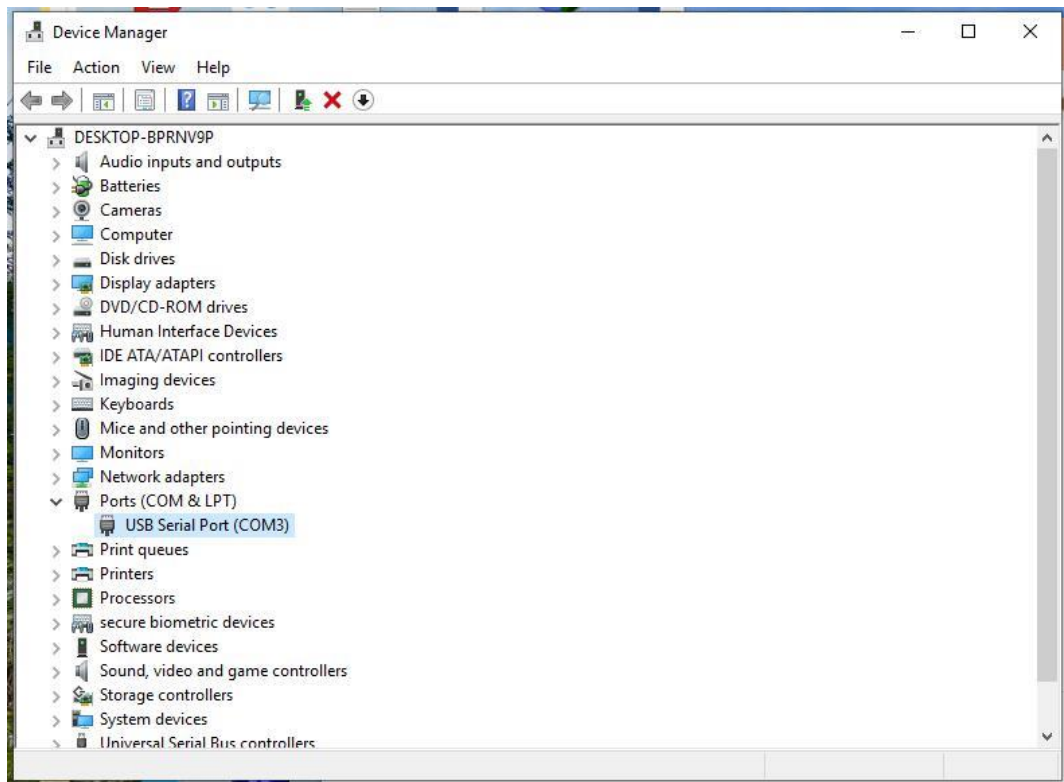


Fig1

Before using the computer to control matrix, please install the serial port line driver. The following is the operation mode and steps of the control software, please read the instructions before operation.

2. Software setting

2.1 Software interface

Start the software, operation interface window as below:

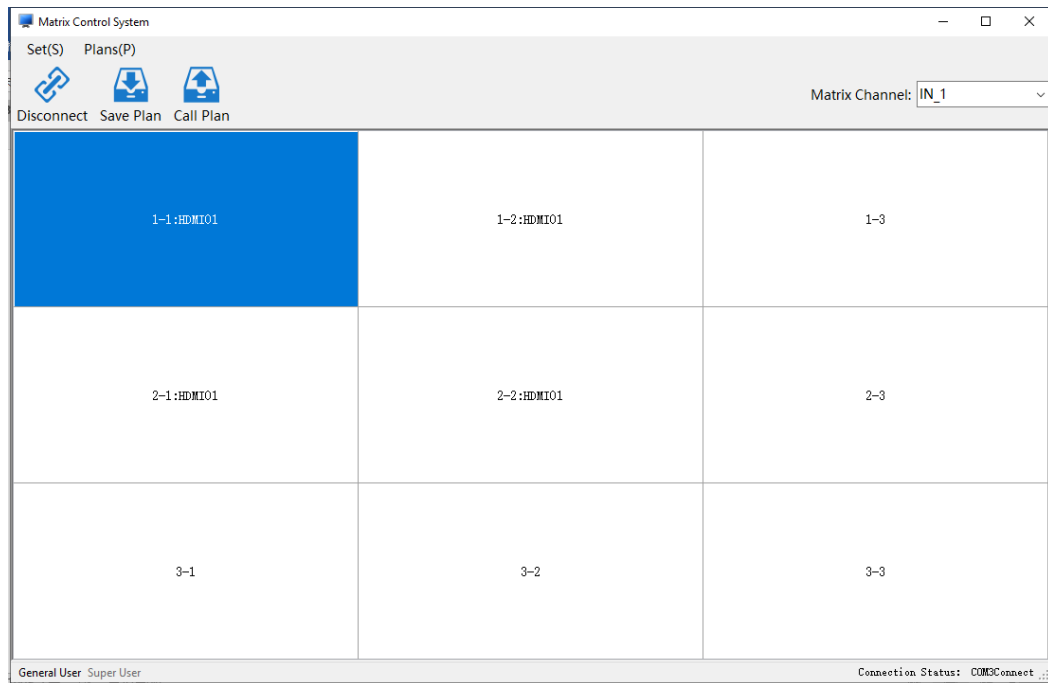


Fig 2

2.2 Communication setting

Click up-left “**Set(S)**”, then select “Com Setting(C)”, at the **Communication Setting** interface, **Splicing Equipment** part, COM select **COM 3**; at the **HDMI Matrix** part, click in front of **Matrix interaction**(Meanwhile do not other matrix series). if use net matrix, input IP address, for IP modification method, please check Chapter 4.

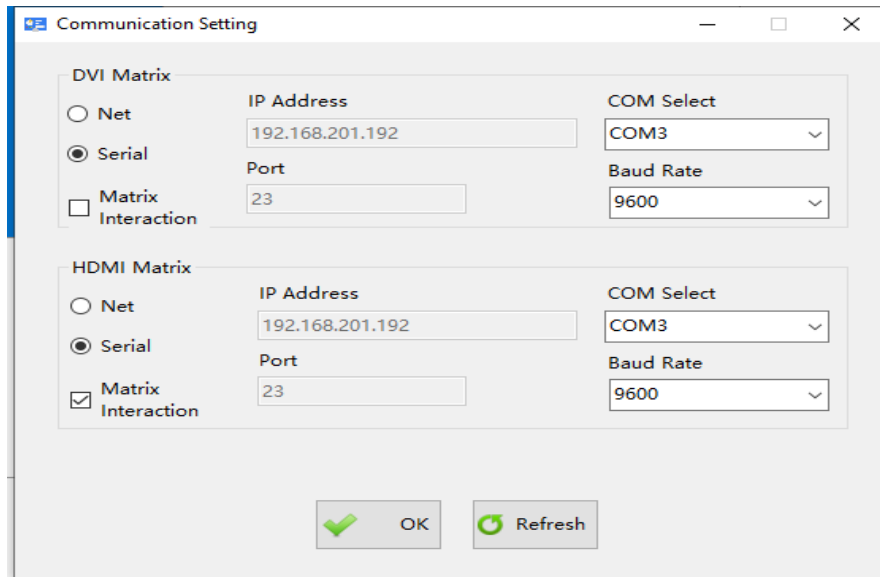


Fig 3

2.3 Splice setting

Click up-left “**Set(S)**”, then select “**Video Well Setting(p)**”, for example the 3*3

Video Well Setting as bellow :

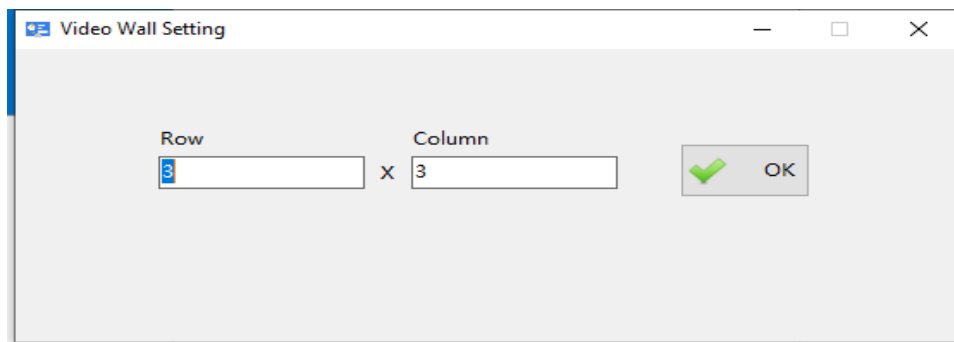


Fig 4

2.4 Matrix setting

Click up-left “**Set(S)**”, then select “**Matrix setting(M)**”, default brand is single switch, if you user other brand splicing board, first you have to add switching machine protocol, then you can control the monitor Startup & Shutdown.

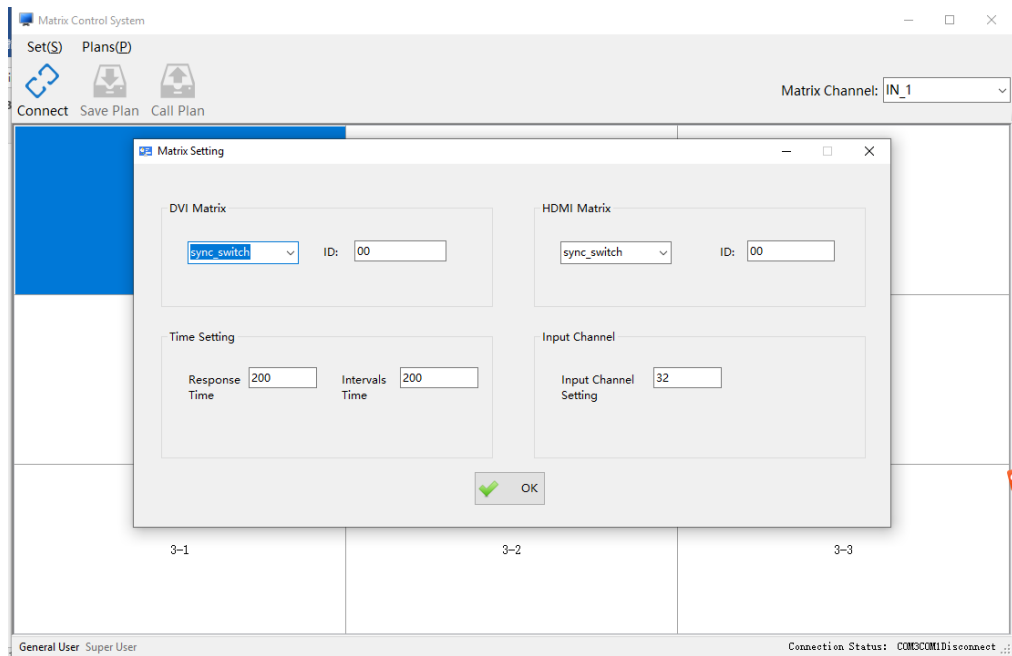


Fig 5

2.5 Matrix channel switching operation

In the upper right corner of the software, select the input channel, then select the corresponding screen (lattice) and right click to select HDMI (if the matrix output is DVI, select DVI), the screen will switch to the selected signal. Select multiple at the same time when selecting the screen (lattice), then right click to select HDMI, and multiple screens will switch to the selected input signal at the same time.

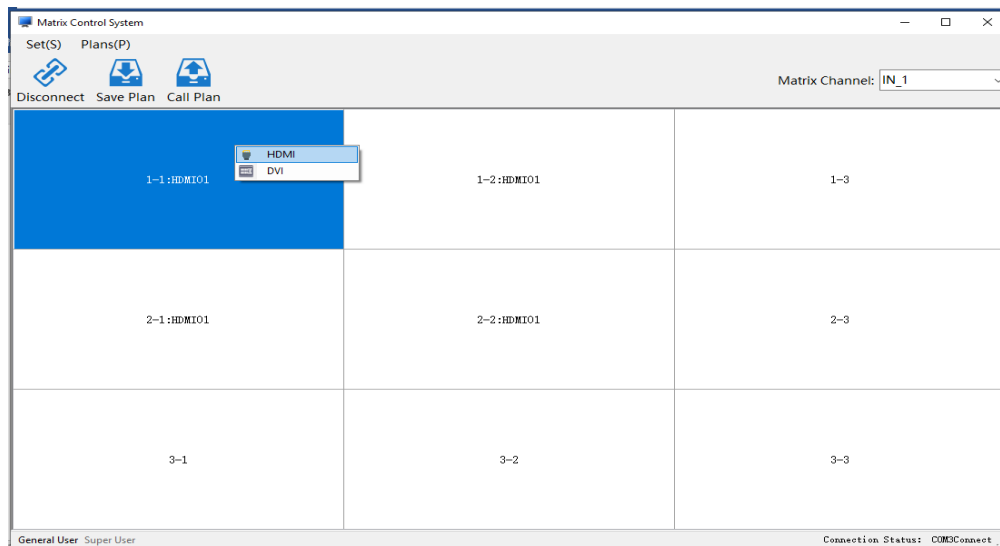


Fig 6

2.6 Plan function

The plan function includes: saving the plan, call the plan, and pre-planning the round play. Before using the plan function, be sure to open the communication connection. If the communication connection isn't opened, the plan function will not be available.

1, save the plan: save the plan can only save up to 16 pre-plans, if the saved plan has already reached 16, continue to save when the "pre-plan is full" prompt window will appear as shown in Figure 7, if you want to continue to save the plan, then To delete a saved plan. Go to the "Save Plan" screen as shown in Figure 9. Click "Pre-plan" in the menu bar of the main interface of the software, click "Save Plan" in the drop-down menu that appears, and the "Save Plan" window will pop up, as shown in Figure 12. The save plan name can be changed.

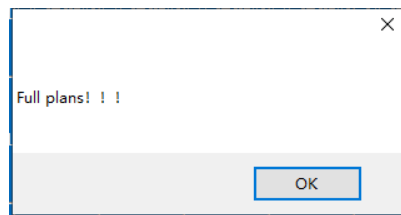


Figure7 plan full

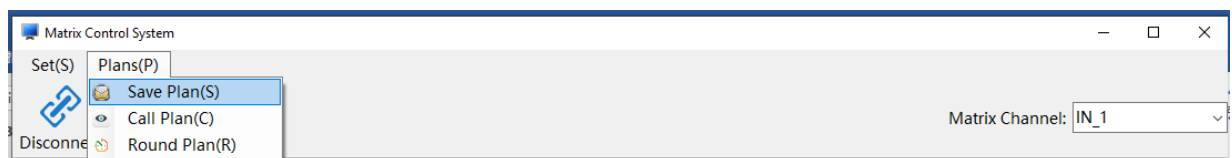


Figure 8 Enter the save plan interface

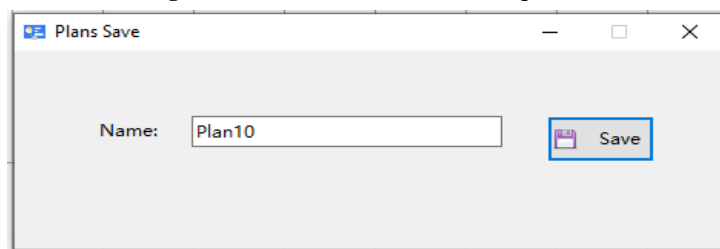


Figure 9 Save the plan interface

Call the plan: Enter the "call plan" interface as shown below. Click the "plan" in the menu bar of the main interface of the software, click "Call plan" in the drop-down menu that appears, and the "call plan" window will pop up. As shown in Figure 10, double-click the selected plan to get the plan. Right mouse button to delete, rename the plan

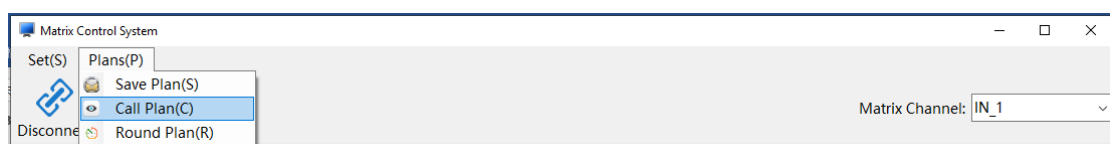


Figure 10 Enter the call plan interface

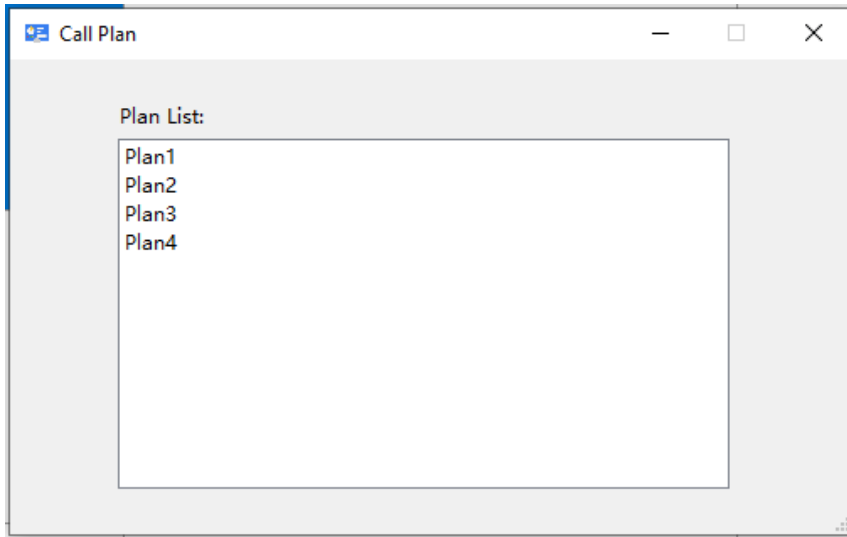


Figure 11 Call the plan interface

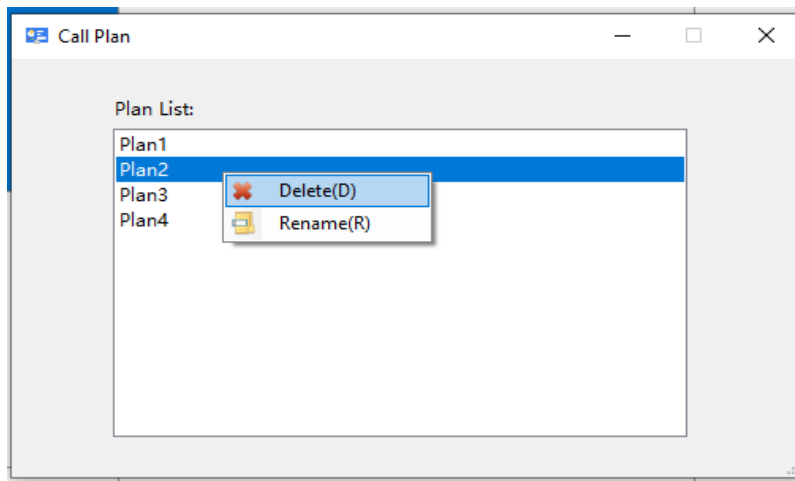


Figure 12 Delete, rename the plan

3、round plan : Enter the "round plan" interface as shown in Figure 13. Click the "plan" in the menu bar of the main interface of the software, click " round plan" in the drop-down menu that appears, and the "round plan" window will pop up, as shown in Figure 13. The interface of the " round plan" is shown in Figure 15.

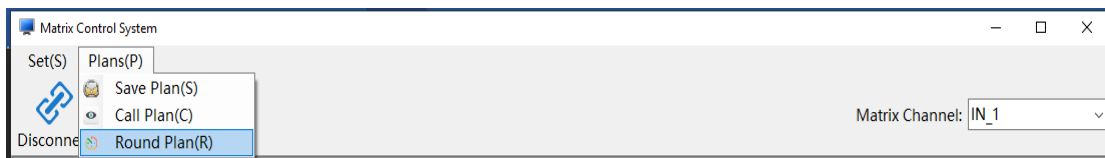


Figure 13 Enter the round plan interface

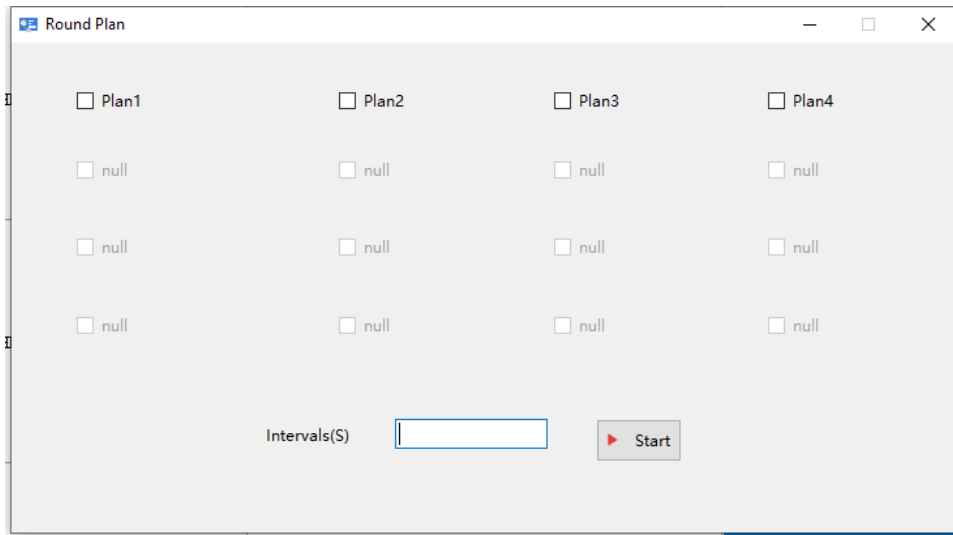


Figure 14 round plan interface

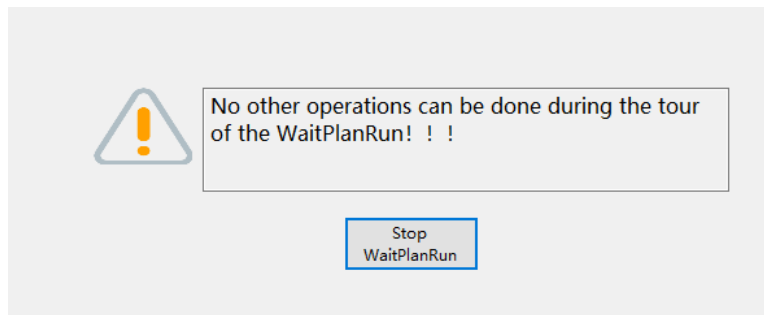


Figure 15 round plan interface

3. Matrix IP setting

Default static IP address is 192.168.1.192, login port is 23. The communication must first make the computer and the equipment under the same network segment. Modify the local computer connection as shown in the figure below:

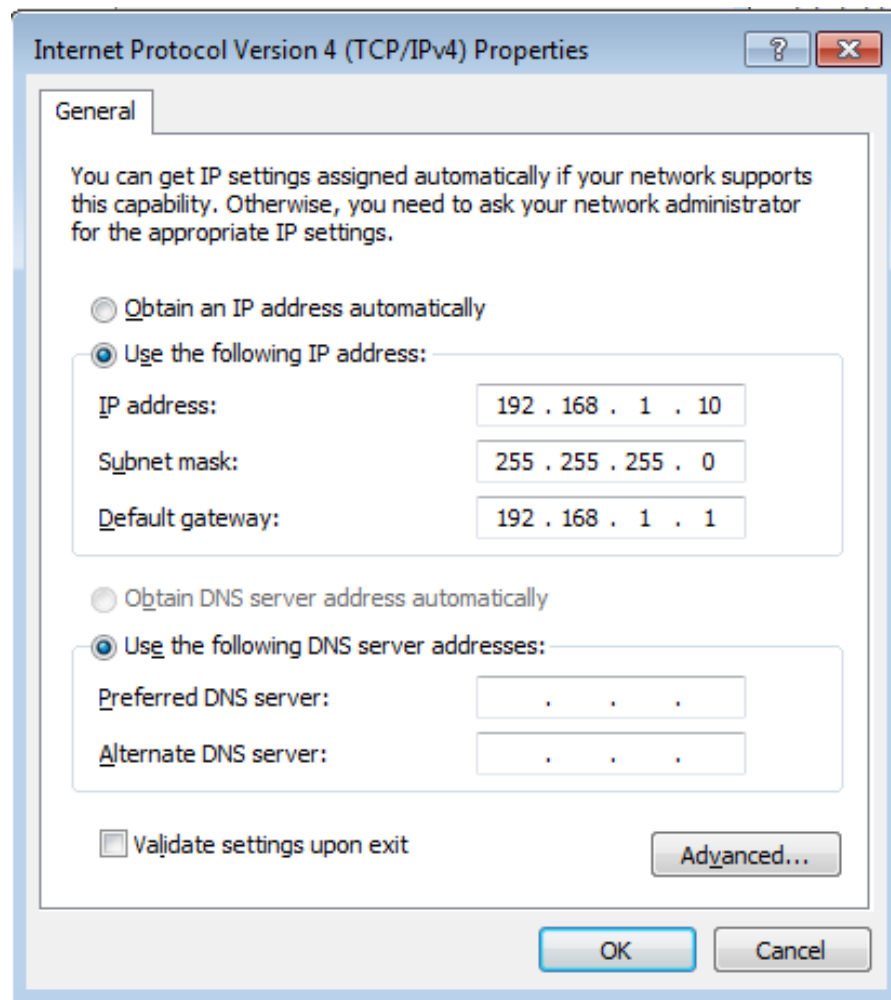


Fig 16

In actual application, if the IP address need to be changed, enter the current IP address of the machine (default is 192.168.1.192) in the browser address bar, and log in the configuration network module interface.

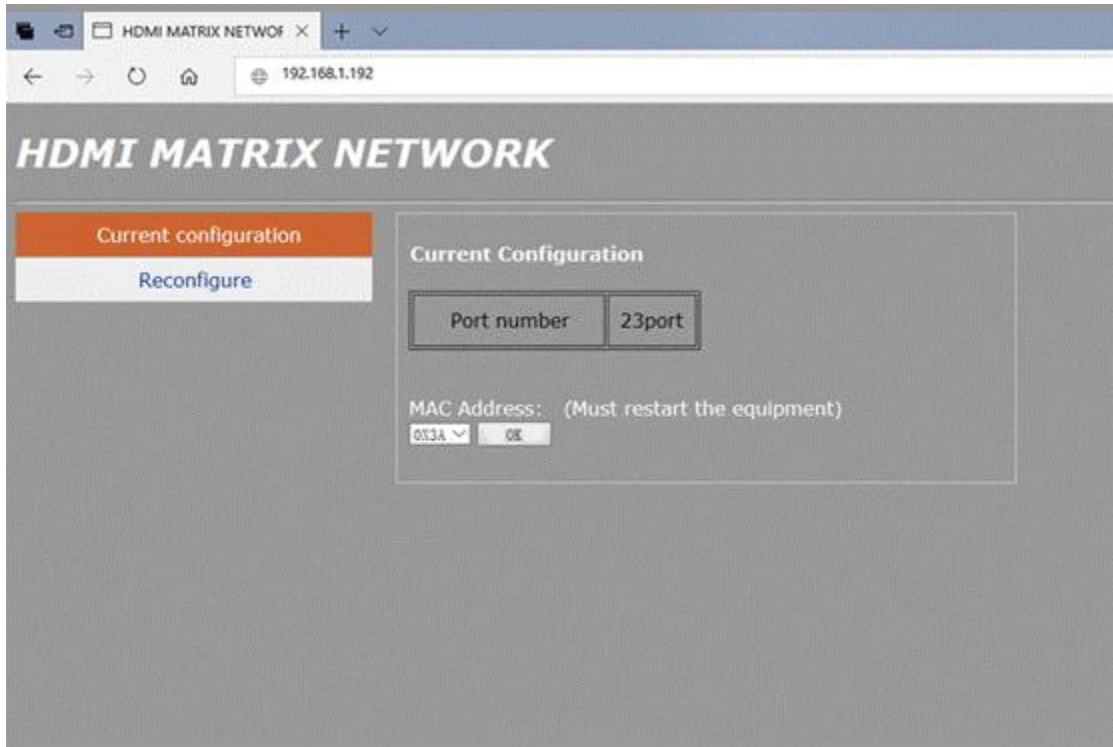


Fig 17

Click “ Current configure”, Enter the static IP setting interface, input right IP address and the gateway, then click **OK**, connect the matrix and Router or switch with net wire.

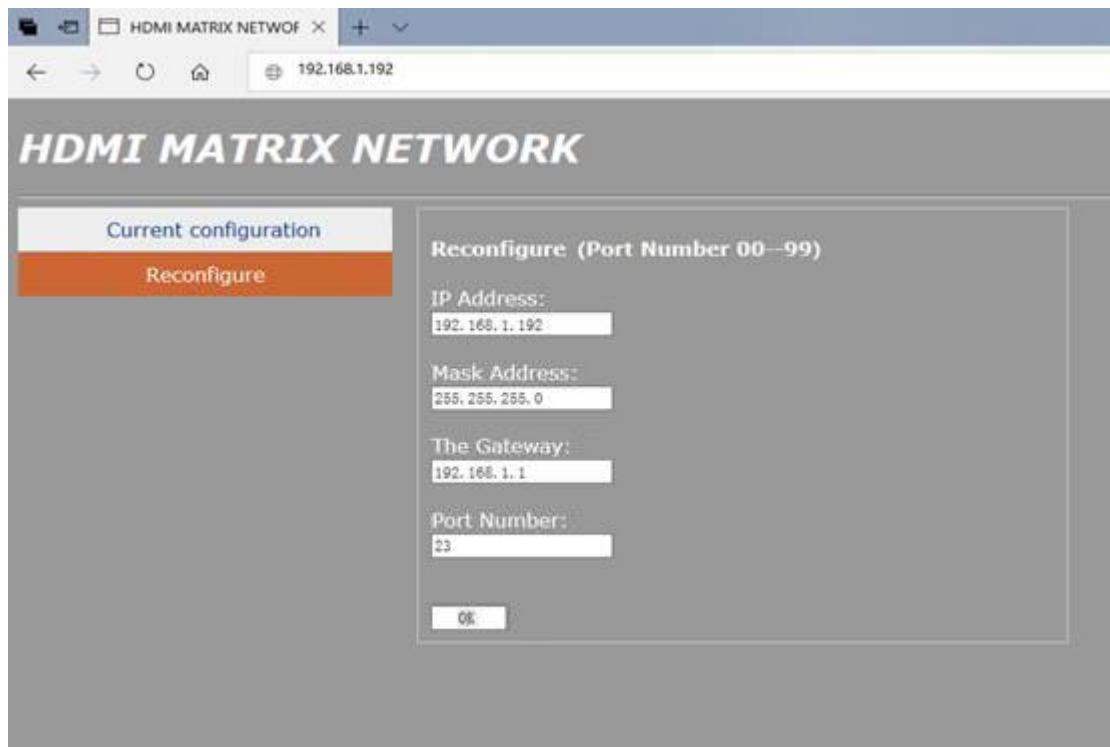


Fig 18

4. **Note**

4.1 Super user password is 123321, they can set the software menu and configuration ID

4.2 If the parameter modification needs to be saved every time, or if you want to save a certain state before power failure, you need to click **Save changes**, and do not carry out other operations before the “**saving!**” or “**Save ok**” disappear;

4.3 The output interface of the matrix shall be wired corresponding

4.4 Please click **Produce Identifier** for the first time, and then set the ID before splicing

4.5 If the screen does not show the identification code, please check whether the control computer is connected correctly with the control serial line of the large screen.